



HOGARTH RIVERVIEW MANOR PROJECT

Located on North Lillie Street, the Hogarth Riverview Manor Project is another example of our commitment to providing high quality, client-centred care to seniors in Northwestern Ontario. Once completed, Hogarth Riverview Manor will provide an integrated continuum of seniors' healthcare, in a modern, home-like environment for residents, their families, our staff and volunteers.

PROJECT STAGES

1

Hogarth Riverview Manor EXPANSION

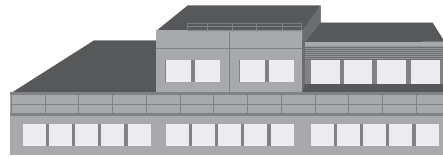


416 LONG-TERM CARE BEDS

83.6 Million, 261,356 sq ft
Completed Fall 2015

2

The LINK

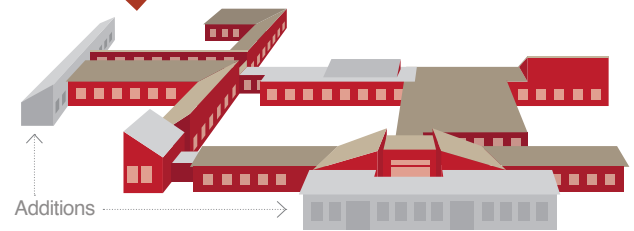


15,000 SQUARE FEET

Joining the Sister Leila Greco Apartments to our long-term care home, Hogarth Riverview Manor.

3

Hogarth Riverview Manor ADDITION



32 LONG-TERM CARE BEDS

9.7 Million, 18,514 sq ft
Completed Spring 2016
Added to 96-bed existing long-term care home.

BENEFITS OF PROJECT

ENABLING MOVEMENT BETWEEN BUILDINGS WITH EASE

38 NEW BEDS ADDED
With a New Total of 544 Long-Term Care Beds

AMENITIES FOR EVERYONE
Pharmacy, Hair Salon, Healthcare Practitioners, Auxiliary Gift Shop, Coffee Shop located in the Link.

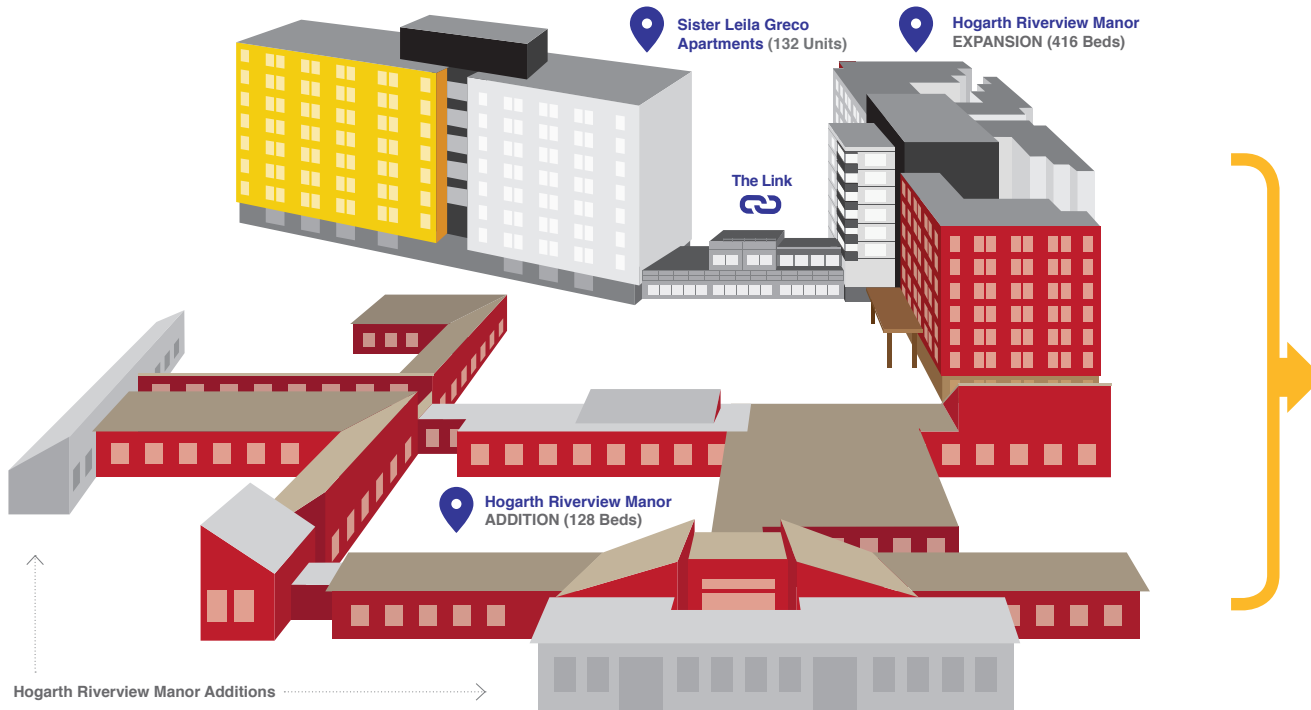
INCREASED QUALITY OF LIFE
Centralized enhanced services provided to tenants, residents & visitors



HOGARTH RIVERVIEW MANOR PROJECT

Located on North Lillie Street, the Hogarth Riverview Manor Project is another example of our commitment to providing high quality, client-centred care to seniors in Northwestern Ontario. Once completed, Hogarth Riverview Manor will provide an integrated continuum of seniors' healthcare, in a modern, home-like environment for residents, their families, our staff and volunteers.

INTEGRATED SERVICES




544
LTC BEDS
UPON COMPLETION

CLIENT-CENTRED CARE, HEALTH & WELL-BEING



LIFE ENRICHMENT



SPIRITUAL CARE



FRESHLY PREPARED FOOD



PHARMACY, HEALTHCARE & SALON



LAUNDRY & HOUSEKEEPING



TELEVISION PHONE & INTERNET



PRIVATE ROOMS AVAILABLE



GREEN SPACES