



ST. JOSEPH'S CARE GROUP

# INFORMATION SESSION

## Redevelopment of Bethammi Nursing Home



# Background

---



ST. JOSEPH'S CARE GROUP

- Ministry of Health and Long-Term Care (MOHLTC) announced Capital Renewal Plan - April 2009
- SJCG analyzed options for Bethammi and submitted a preliminary proposal to the MOHLTC to 'get in the queue' (Summer 2009)
- North West LHIN reviewed SJCG's Public Engagement Report before making a recommendation for support to the MOHLTC (November 2009)
- MOHLTC announced successful proponents (February 2010)

# Approved Option

---



ST. JOSEPH'S CARE GROUP

Add Bethammi Nursing Home beds to  
Centre of Excellence for Integrated Senior Services  
project at Hogarth Riverview Manor site

# Background

---



## Centre of Excellence for Integrated Seniors' Services

# The Vision: A Centre of Excellence for Integrated Seniors' Services

---



- 336 Long-Term Care Beds
  - Includes 64 regional beds for residents with responsive behaviours
  
- 132 Supportive Housing Units
  - Self-contained apartments
  - Support service packages purchased and available 24/7
  
- 150 additional Community Support Clients

# Centre of Excellence: A Shared Vision

---



Many possibilities were envisioned by all consulted:

- An integrated system of services
- Opportunities to address Alternate Level of Care (ALC) issues
- Opportunities for education, research and best practice
- Opportunities to build services around seniors' needs
- Economic spin-offs to the community
- Opportunities to address behavioural issues in long-term care
- Maintains long-term care beds in Thunder Bay to meet current and future needs of aging population

# CEISS - Architect's Rendering

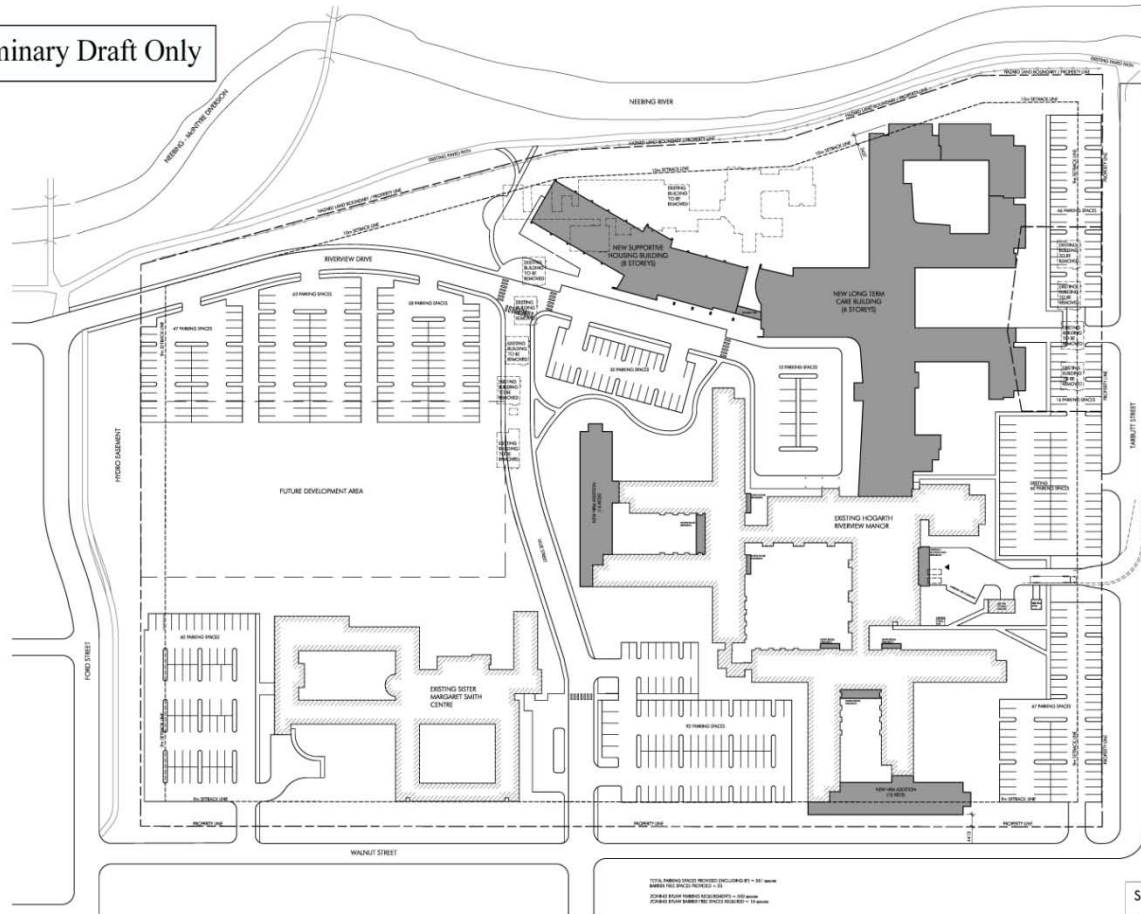


ST. JOSEPH'S CARE GROUP



# CEISS - Site Plan

Preliminary Draft Only



TOTAL PARKING SPACES PROPOSED (2018-01-01) = 341  
 MINIMUM PER SPACES REQUIRED = 411  
 EXISTING SPACES (EXISTING DEVELOPMENT) = 100 SPACES  
 EXISTING SPACES (NEW SPACES REQUIRED) = 10 SPACES

**SITE PLAN**  
 Long Term Care Building  
 FIRM-CEISS - SICO MASTER PLAN  
 Rick Shepherd - Client, Mike Architects & Engineer  
 Montgomery Seam - Architects Inc.  
 Scale: 1:500  
 CDR: 10/2018  
 DSA: 10/21

# CEISS - Architect's Rendering



ST. JOSEPH'S CARE GROUP



# CEISS - Architect's Rendering



ST. JOSEPH'S CARE GROUP



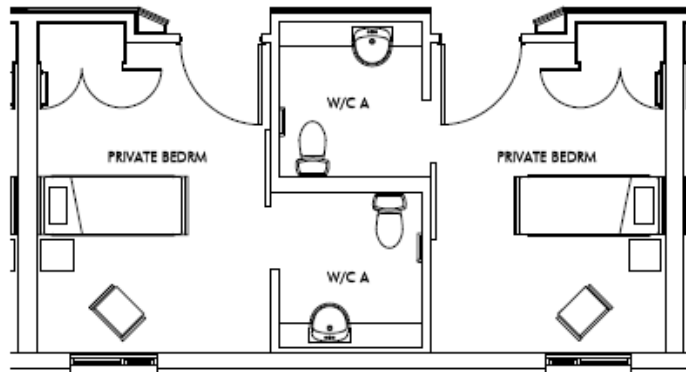
# Dining Room



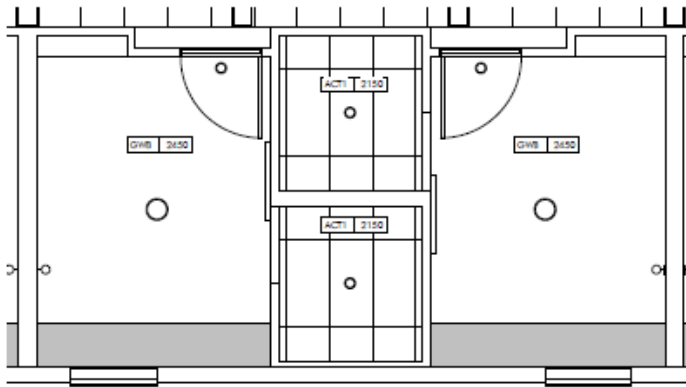
ST. JOSEPH'S CARE GROUP



# Private Bedroom Layout



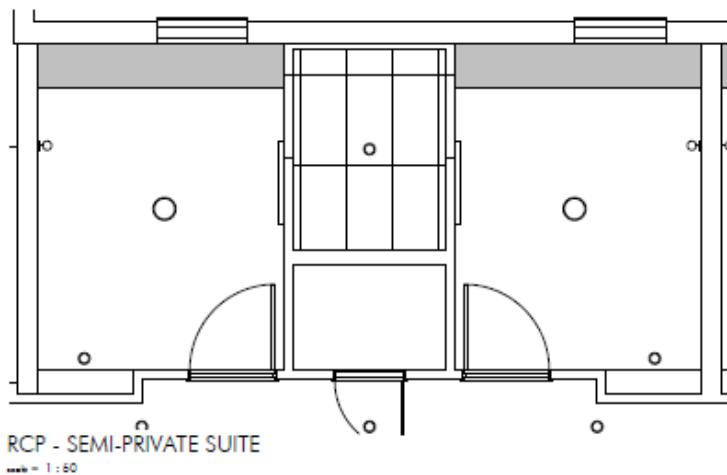
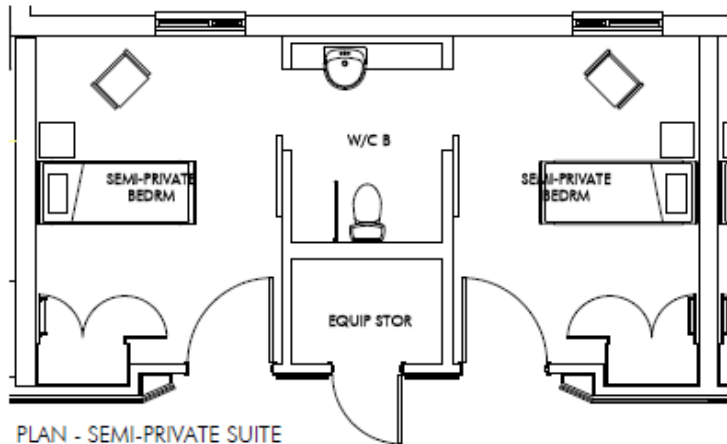
PLAN - BHU PRIVATE SUITE  
scale = 1 : 50



RCP - BHU PRIVATE SUITE  
scale = 1 : 50

CEIS - Long Term Care Building		N
Lush Designers Group Inc. Architects & Engineers Management Group Architects Inc.		
PRIVATE SUITE		RDS 1.1a
1 : 50	10.02.2016	Version 1
Sign: CD		
Signature		Date

# Semi-Private Bedroom Layout



CBGG - Long Term Care Building		N ⊕
Kuch Diptaraman Gleser Melle Architects & Engineer Management System Architects Inc.		
SEMI-PRIVATE SUITE		RDG 1.2a
1 : 50	10.02.2010	Version 1
Sign: DR		
Signature		Date



ST. JOSEPH'S CARE GROUP



Interior Elevation Option 1



Suite Interior View 1



Interior Elevation Option 2



Suite Interior View 2

CBGG - Long Term Care Building  
Kuch Dehmanjoo Glass, Metal Architect & Engineer  
Manjamejy Glass Architect Inc.



SUITE VIEWS

RDS 1.2b

1 of 50

10.02.2010

Version 1

Sign Off

Signature

Date



ST. JOSEPH'S CARE GROUP

# Timeline & Current Status

---

- Demolition completed on CEISS site
- Housing project foundation ground work – Spring 2010
- Long-Term Care planning with the addition of the Bethammi beds will proceed immediately
- MOHLTC development agreement – Spring 2010
- Project completion - December 2012



ST. JOSEPH'S CARE GROUP

# Next Steps

---

## Coordinate:

- Tour of Hogarth Riverview Manor
- Meeting with Community Care Access Centre (CCAC) as requested

## Updates:

- Family Council
- Residents Council
- Choices for Seniors' Newsletter
- CEISS Project Website: [www.ceisstbay.ca](http://www.ceisstbay.ca)
- St. Joseph's Care Group's Website: [www.sjcg.net](http://www.sjcg.net)